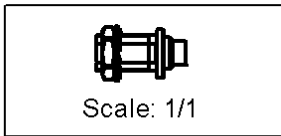
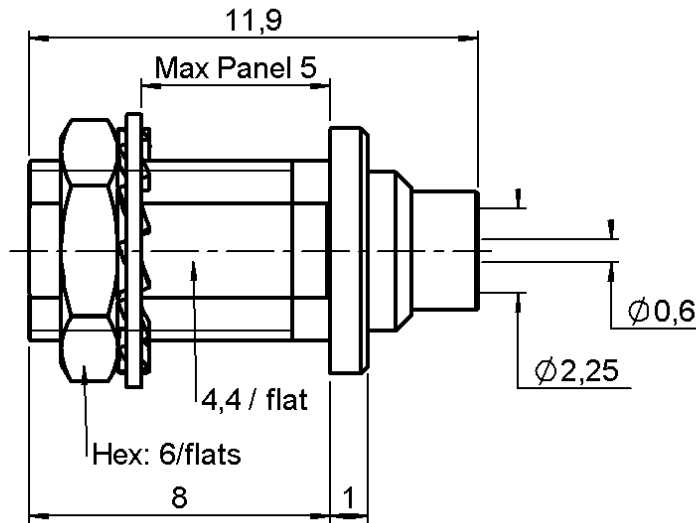


STRAIGHT BULKHEAD JACK SOLDER TYPE

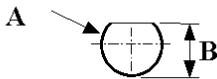
R113.303.200

CABLE .085

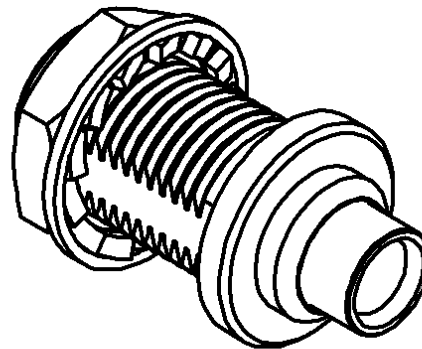
Series : MCX



PANEL CUT OUT



mm		
	Maxi	mini
A	5	4.9
B	5.59	4.46



All dimensions are in mm.



COMPONENTS	MATERIALS	PLATINGS (µm)
BODY	BRASS	GOLD 0.2 OVER NICKEL 2
CENTER CONTACT	BERYLLIUM COPPER	GOLD 1.3 OVER NICKEL 2
OUTER CONTACT	-	-
INSULATOR	PTFE	-
GASKET	-	-
OTHERS PARTS	BRASS	GOLD 0.2 OVER NICKEL 2
-	-	-
-	-	-

Issue : 0050 A

In the effort to improve our products, we reserve the right to make changes judged to be necessary.



STRAIGHT BULKHEAD JACK SOLDER TYPE

R113.303.200

CABLE .085

Series : **MCX**

PACKAGING

Standard	Unit	Other
100	'W' option	Contact us

SPECIFICATION

ELECTRICAL CHARACTERISTICS

Impedance		50 Ω
Frequency		0-6 GHz
VSWR	1.10 +	0.040 x F(GHz) Maxi
Insertion loss		0.25 √F(GHz) dB Maxi
RF leakage	- (NA - F(GHz)) dB mini
Voltage rating		250 Veff Maxi
Dielectric withstanding voltage		750 Veff mini
Insulation resistance		1000 MΩ mini

CABLE ASSEMBLY

Stripping	a	b	c	d	e	f
mm	2.70	0.00	0.00	0.00	2.10	0.00

Assembly instruction :

Recommended cable(s)

MECHANICAL CHARACTERISTICS

Center contact retention		
Axial force – Mating end		NA N mini
Axial force – Opposite end		NA N mini
Torque		NA N.cm mini

Cable retention

- pull off	155 N mini
- torque	NA N.cm

TOOLING

Part Number	Description	Hexagon
.	.	.
R282.740.020	SOLDERING MOUNTING	

Recommended torque		
Mating		NA N.cm
Panel nut		60 N.cm
Clamp nut		NA N.cm
A/F clamp nut		0.000 mm

OTHERS CHARACTERISTICS

Mating life		500 Cycles mini
Weight		0.000 g

ENVIRONMENTAL

Operating temperature		-55/+115 °C
Hermetic seal		NA Atm.cm3/s
Panel leakage		NA

Issue : **0050 A**

In the effort to improve our products, we reserve the right to make changes judged to be necessary.



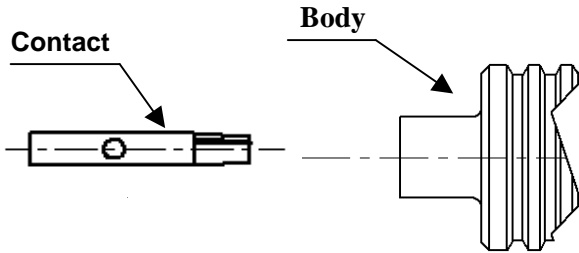
STRAIGHT BULKHEAD JACK SOLDER TYPE

R113.303.200

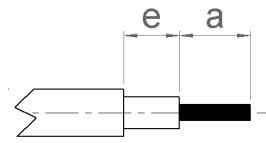
CABLE .085

Series : MCX

COMPONENT



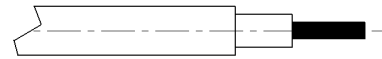
STRIPPING DIMENSIONS



We recommend a thermal preconditionning cable.

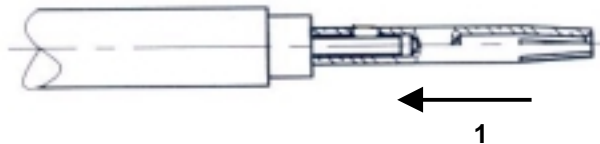
1

Cable stripping.



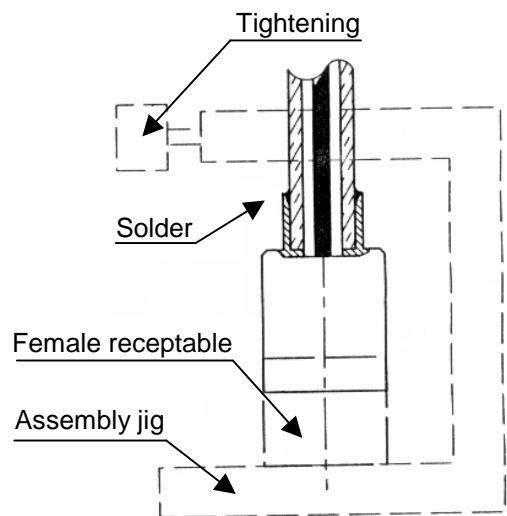
2

Tin centre contact solder pot.
Solder centre contact on cable inner conductor.
Clean solder.



3

Introduce cable into the connector body until contact with the body shoulder.
Place the sub assembly into the assembly jig R282 740 020 (or equivalent).
We advice to connect a female receptable to the connector prior to solder the body in order to respect right centre contact position.
Tighten the sub assembly.
Solder body on the cable.
Let the assembly cool down before removing it from the jig.
Clean solder.



Issue : 0050 A

In the effort to improve our products, we reserve the right to make changes judged to be necessary.

